

4

3

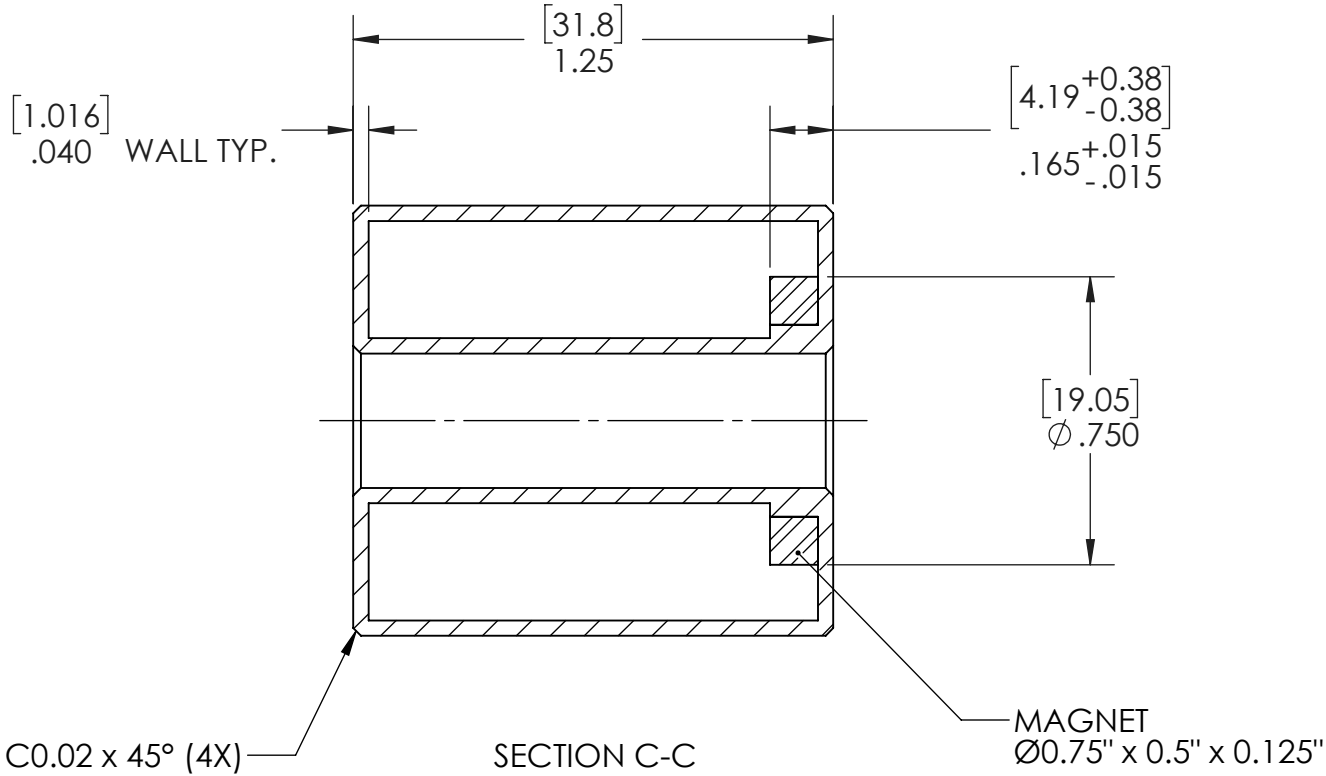
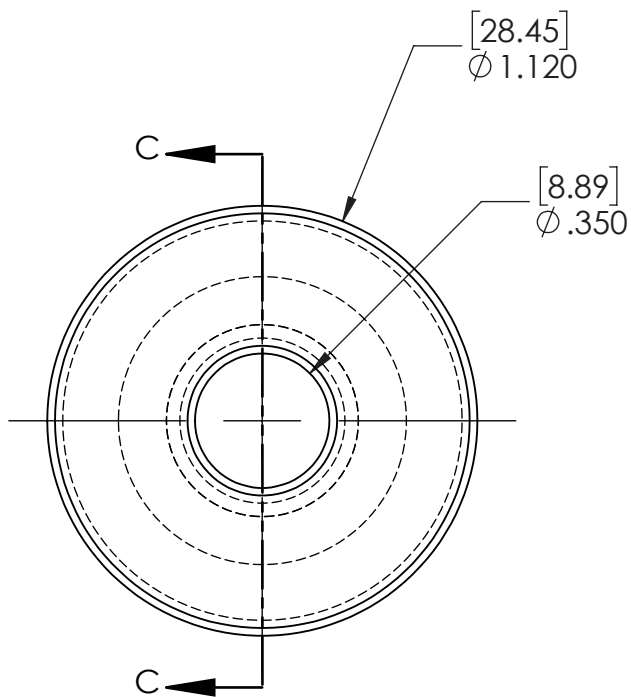
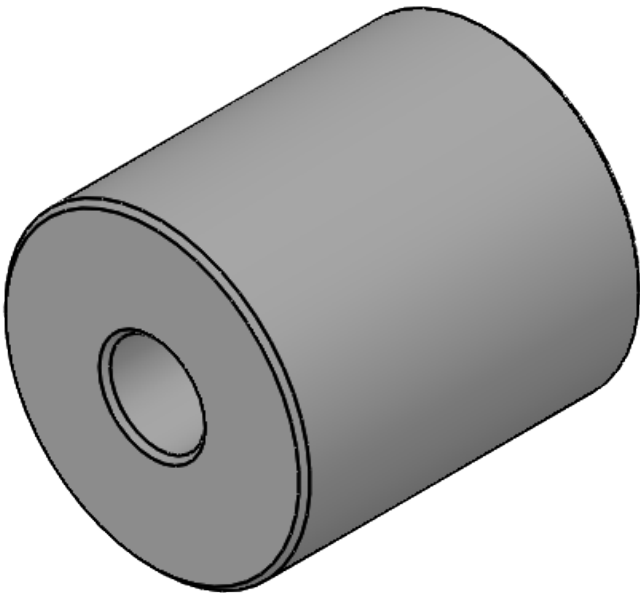
2

1

NOTES:

MATERIAL: TFM 1600 or PTFE
MAGNET: CERAMIC I, 0.750" OD
WEIGHT: 12.7 grams TYPICAL
SPECIFIC GRAVITY: 0.69 TYPICAL
VOLUME: 18.4 cm TYPICAL
MAX OPERATING TEMPERATURE RANGE: -10 to 150 degree C
MAX OPERATING PRESSURE: 25 PSIG at 21 degree C

REVISIONS				
ZONE	REV.	DESCRIPTION	DATE	APPROVED
		Initial release	July 17,2018	



PROPRIETARY AND CONFIDENTIAL
THE INFORMATION CONTAINED IN THIS
DRAWING IS THE SOLE PROPERTY OF
Intempco Controls LTD. ANY
REPRODUCTION IN PART OR AS A WHOLE
WITHOUT THE WRITTEN PERMISSION OF
Intempco Controls LTD. IS
PROHIBITED.

		UNLESS OTHERWISE SPECIFIED:		NAME	DATE	Intempco Controls LTD www.intempco.com					
		DIMENSIONS ARE IN INCH [mm]	DRAWN	C.D.	July 17,2018	TITLE: PTFE or TFM Small Float, L=1.25"					
		TOLERANCES (in inch)	CHECKED								
		FRACTIONAL ±	ENG APPR.								
		ANGULAR: MACH ± BEND ±	MFG APPR.								
		TWO PLACE DECIMAL ±0.010	Q.A.								
		THREE PLACE DECIMAL ±0.005	COMMENTS:			SIZE B DWG. NO. HD302816-02 REV					
		INTERPRET GEOMETRIC TOLERANCING PER:									
		MATERIAL TFM 1600 or PTFE									
		FINISH									
NEXT ASSY	USED ON								SCALE: 2:1 WEIGHT: SHEET 1 OF 1		
APPLICATION		DO NOT SCALE DRAWING									

4

3

2

1